

# “Common Strategy for Sustainable Territorial Development of the cross-border area Romania-Bulgaria”, CBC Project MIS-ETC 171

## Work Package 3 – „Development of common resources for a territorial planning analysis and strategy”

Work Package 3 is led by Project Partner 9 – Agency for sustainable Development and Eurointegration - ECOREGIONS



Fig. 1: Area of Interest of the CBC project (71 930 km2)

### Reference land cover layer

Setup and development of systems and information services allowing the integration of the new, harmonized spatial databases and services with the existing information systems at county/district level.

The database will ensure the necessary data for a comprehensive set of indicators at NUTS 3, 2 and LAU (local administration unit) level.

The database is expected to be coordinated and regularly updated by a Regional center for integrated risk and territory management for the region of Lower Danube (Resolution of the Bulgarian government – 29/24.06.2013)

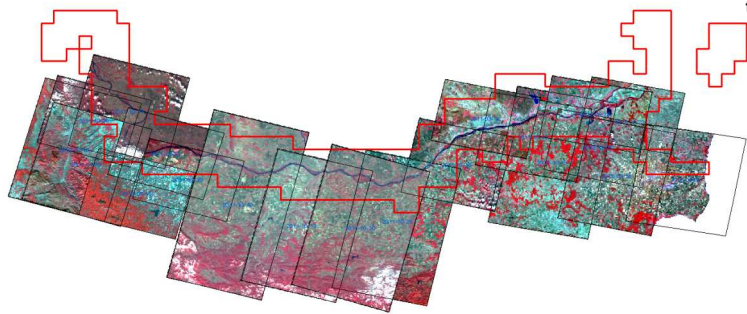


Fig. 2: Mosaic of orthorectified RapidEye imagery from Core 01 dataset

### Reference land cover layer

Uniquely defined geo-referenced units of management, holding the information on land cover and land use .

Created and updated on the base of:

- ❑ Classification concepts of ISO 19144-2 (Land Cover Meta Language – LCML)
- ❑ Best management practices from the Land Parcel Identification System (LPIS) that channels all EU area-based aids in agriculture
- ❑ COPERNICUS CORE satellite image datasets in combination with in-situ data (LPIS, aerial orthophotos)
- ❑ Methodology elaborated in collaboration with the MARS Unit of the Joint Research Centre of the European Commission

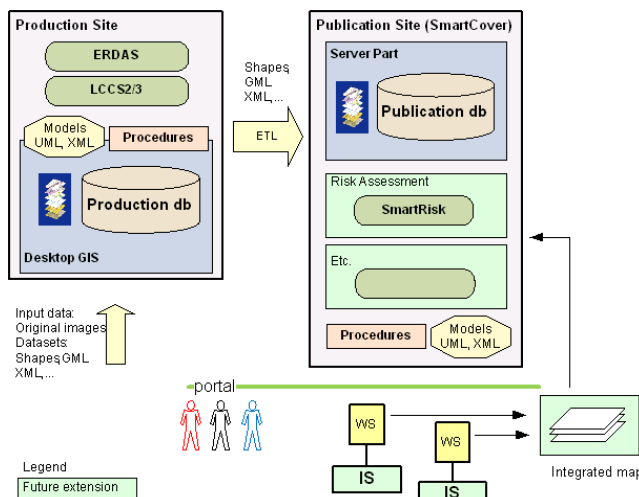


Fig. 3: System Architecture - SmartCover

### Main Deliverables and Services

Two adjacent reference land cover datasets for the Bulgarian and Romanian part of the cross-border cooperation (CBC) project area (71 930 km2)

- ❑ Both layers fully interoperable following the INSPIRE principles
- ❑ Common specification ensuring efficient cross-border analysis and reporting
- ❑ Classification coherence ensured by the use of standardized semantic language
- ❑ Provided through Web-based geo-service
- ❑ An efficient spatial dataset for regular monitoring of changes and integrated risk and territory management, as well as the efficient management of EU funds
- ❑ A reliable and harmonized spatial database for services under flagship EU programs as GMES-COPERNICUS, Danube Strategy, Galileo



Fig. 4: First results of the reference land cover dataset provided through the Geoportal as WMS